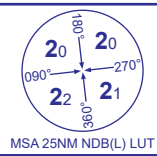


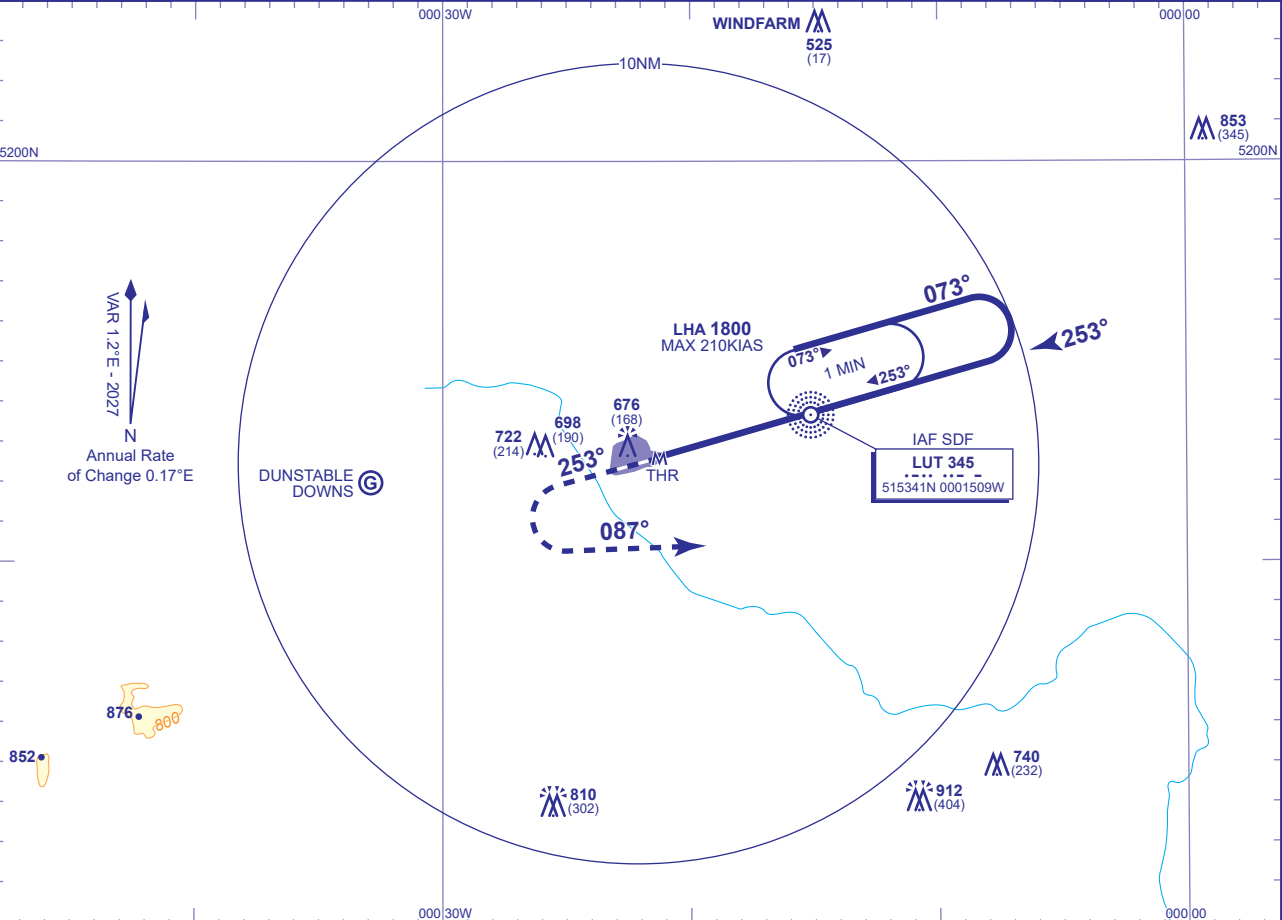
INSTRUMENT APPROACH CHART - ICAO

LONDON LUTON
NDB(L)
RWY 25
(ACFT CAT A,B,C,D)



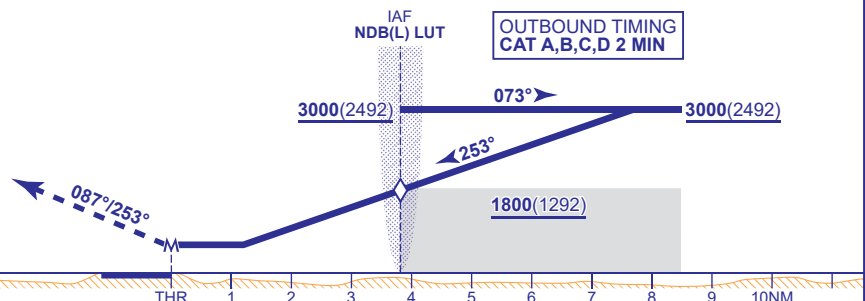
| | | | | |
|------|------------------|---------------------|-----------------------|-------------------------------|
| APP | 129.550 | LUTON RADAR | AD ELEVATION | 527 |
| TWR | 132.555, 126.730 | LUTON TOWER | THR ELEVATION | 508 |
| | 121.755 | LUTON GROUND | OBSTACLE ELEVATION | 912 AMSL (404) (ABOVE THR) |
| RAD | 128.750 | LUTON DIRECTOR | | |
| ATIS | 120.580 | ARRIVAL INFORMATION | BEARINGS ARE MAGNETIC | |

TRANSITION ALTITUDE
6000



RECOMMENDED PROFILE Gradient 5.2%, 316FT/NM

MAPT 3.9NM after passing NDB(L) LUT (THR RWY 25)
Climb to **3000**. Straight ahead to **1500**, then turn left onto track **087°**, continuing climb to **3000** then continue as directed.
RCF: Follow missed approach procedure to **3000** then return to **NDB(L) LUT** at **3000**.



| Aircraft Category | | A | B | C | D | Rate of descent | G/S KT | 160 | 140 | 120 | 100 | 80 |
|--------------------|------------|-----------|-----------|-----------|-----------|-----------------|---------|------|------|------|------|------|
| OCA (OCH) | Procedure | 930(422) | 930(422) | 930(422) | 930(422) | | FT/MIN | 840 | 740 | 630 | 530 | 420 |
| VM(C)OCA (OCH AAL) | Total Area | 1100(573) | 1100(573) | 1300(773) | 1300(773) | NDB(L) to MAPT | MIN:SEC | 1:28 | 1:40 | 1:57 | 2:20 | 2:56 |

NOTE Aircraft will normally be required to hold not lower than **3000**.

CHANGE (1/26): MAG VAR, MAG TRACKS UPDATED.